

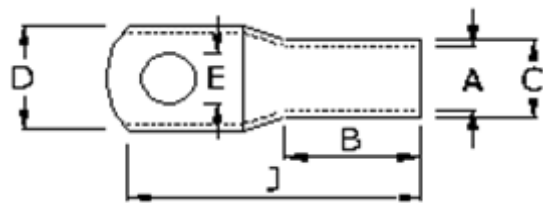


**NO POWER WITHOUT CABLE LUGS JOINTS**



## ALUMINUM LONG BARREL TUBULAR TERMINALS ENDS (LUGS)

MATERIAL GRADE - 1050 'O' (IS 19500 'M') CONDUCTIVITY 61% IACS



| Cross Section (mm <sup>2</sup> ) | ØE   | ØA   | ØC   | D    | B   | J   |
|----------------------------------|------|------|------|------|-----|-----|
| 25                               | 8.2  | 7.2  | 9.6  | 14   | 41  | 69  |
| 35                               | 8.2  | 8.3  | 11.1 | 16   | 50  | 79  |
| 50                               | 10.2 | 10.1 | 13.5 | 19.5 | 49  | 81  |
| 70                               | 10.2 | 10.2 | 14.5 | 20.5 | 62  | 96  |
| 95                               | 12.7 | 12   | 17   | 23.5 | 73  | 109 |
| 120                              | 12.7 | 13.7 | 19   | 26.5 | 73  | 114 |
| 150                              | 12.7 | 15.1 | 21.2 | 29.5 | 83  | 128 |
| 185                              | 12.7 | 16.6 | 23.9 | 33   | 83  | 131 |
| 225                              | 12.7 | 18.6 | 26.1 | 36   | 86  | 140 |
| 240                              | 12.7 | 19.3 | 27.2 | 37.5 | 86  | 144 |
| 300                              | 20.3 | 21.8 | 30.2 | 42   | 89  | 157 |
| 400                              | 20.3 | 25   | 34.8 | 48   | 113 | 187 |
| 500                              | 20.3 | 28.2 | 39.1 | 54   | 125 | 205 |
| 630                              | 20.3 | 21.7 | 44.4 | 61   | 140 | 225 |
| 800                              | 20.3 | 35.7 | 49.5 | 68   | 147 | 250 |
| 1000                             | 20.3 | 41   | 56   | 77.5 | 160 | 280 |

\*all dimensions are in mm

\*Note: Hole diameter (E) can be available in different size as per customer requirement

## ASSEMBLY OF CABLE LUGS AND CONNECTORS

- Take the measurements of the cable lugs/ connectors and their allocation of cross section out of this Catalogue
- Cut the cable right-angled to the conductor. Strip off the insulation of the cable. The part to be stripped of has to be as long as the sleeve (measurement) of the cable lug/ connector + about 10%.
- Before crimping clean the conductors with a wire brush in order to remove dirt and oxidation. Sector-shaped conductors must be rounded before crimping!
- Insert the Non-insulated conductor into the compression sleeve until it reaches the wire stop.
- Before starting to crimp please check whether conductor and cable lug respectively connector have the same cross section and do fit to each other according to our catalogue.
- Please check whether crimping tool and crimping dies are suitable for the cable lugs/ connectors you want to crimp. You can take this information for each series and cross section from the manufacturer's catalogue or the operating instructions of the tool.
- Please pay attention to the quantity and the direction of crimping. If several crimping are necessary.

